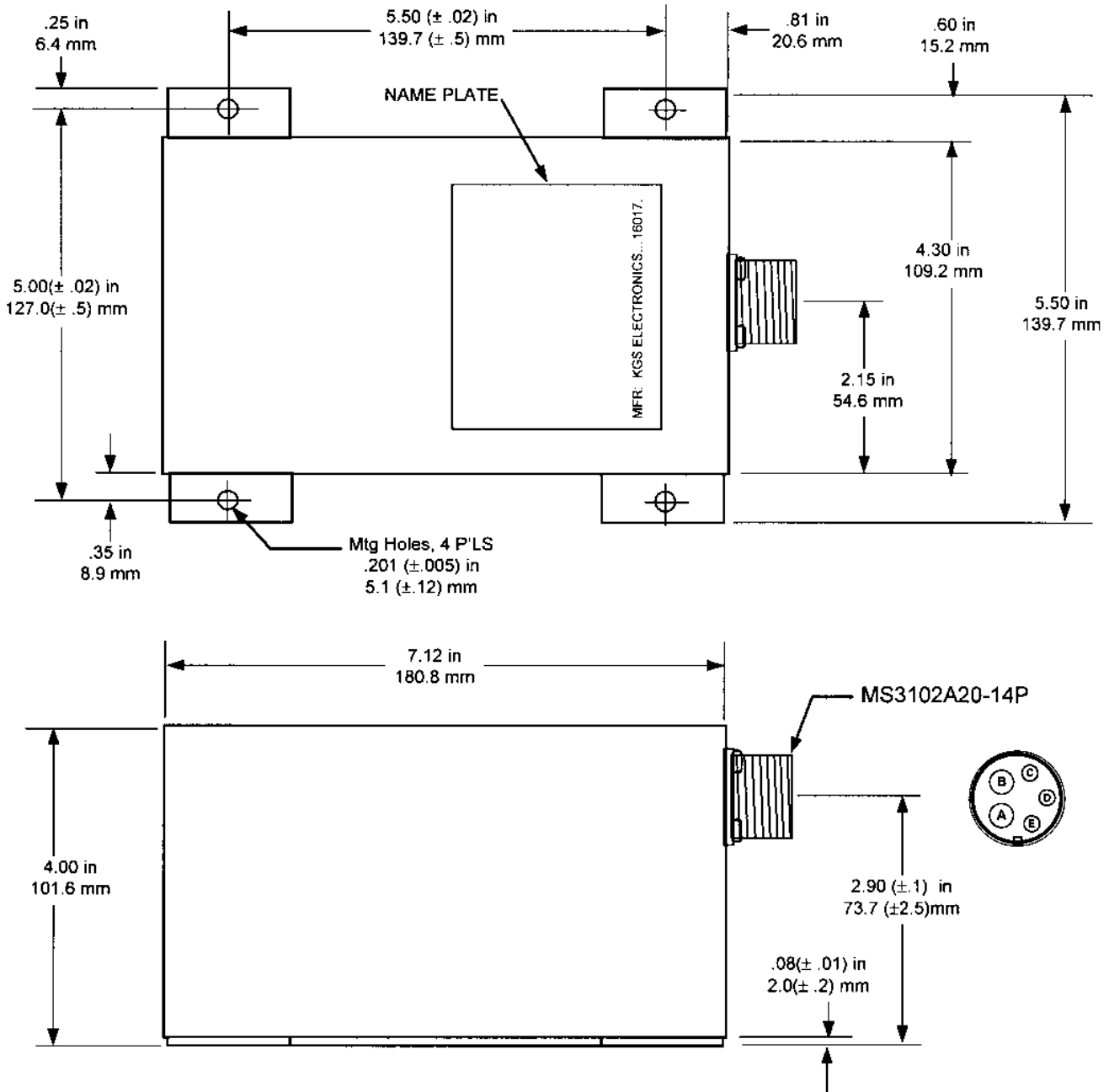


# RHB40

DC/DC Regulated Boost Converter  
Wide Input Voltage Range (8 to 30.5Vdc)

## Outline Drawing



### NOTE

1. Unless otherwise noted, the dimensional tolerance is ± 0.06in (1.6mm)
2. The above dimensions do not include protrusion of the connector and screw heads.

**kgs**

**electronics**

418 East Live Oak Avenue, Arcadia CA 91006-5619 USA ■ Phone: 626-574-1175 ■ Fax: 626-574-0553 ■ info@kgselectronics.com